

inceptor[®]
EVO



Integrated LED Bulkhead

Scolmore[®]
GROUP



Integrated LED Bulkhead

inceptor
EVO

The Inceptor® Evo was born with the contractor in mind, installation of the bulkhead is made faster with the addition of the Flow™ connector. Simple removal of the surface mount adaptor ring allows the product to be semi-recess mounted with ease.

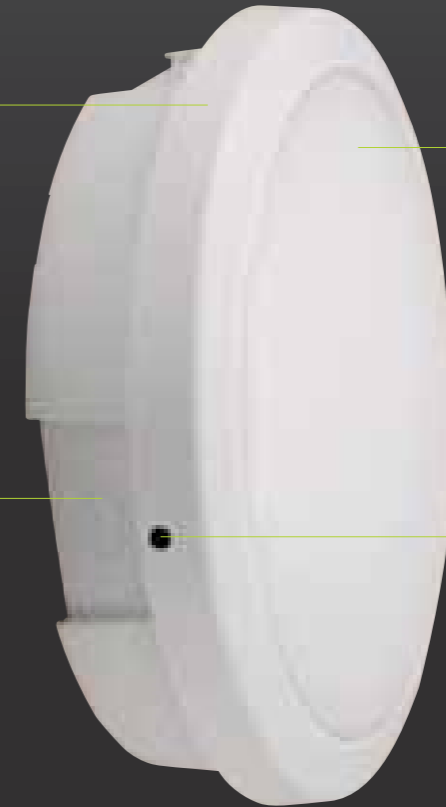
Available in two designs; circular and eyelid. Both utilise opal optical-grade polycarbonate diffusers and a reinforced, impact-resistant polycarbonate body. The product is double insulated and an earth-loop terminal is provided for convenience.

As well as providing 2 styles of fascias, the Evo is also available with 4 distinct modes of operation:

- 3 hour emergency & microwave sensor
- 3 hour emergency
- Microwave sensor
- Standard driver

Fast-fit Twist and Lock Installation Process

The twist and lock process saves time during the installation which simplifies the maintenance and servicing of the luminaire.



Energy Efficient

With an A+ Energy rating and an L70 LED lifetime of 50,000 hours, the fitting affords excellent opportunities for cost savings compared to traditional lamp types.

One Rear and Four Side Entry Points

Rear cable access can be achieved via the rubber grommet located in the centre. Suitable for use with 20mm and 25mm conduit fixings.

Anti-tamper Screw (PC housing)

Prevent unauthorised access, theft or removal of the luminaire. This makes the Evo particularly suitable for public areas such as schools and shopping malls.

LED SMD LED technology which creates less heat than standard LED's.

IP65 RATING Dust tight and protected against low pressure water jets.

4200k A cool white colour temperature for a natural appearance.

Fast-fit Integrated Flow™ Connector



An integrated 4 Pole Flow™ connector allows for quick and simple connection & disconnection for initial and periodic testing to be carried out.

The Flow™ connector offers loop-in and out facility with large terminals accepting up to 3 x 2.5mm².

Metal Enclosures

The robust polycarbonate construction (IK08) can be enhanced further by encasing the body in an additional metal enclosure, providing excellent vandal resistant protection (IK10).



Circular



Eyelid



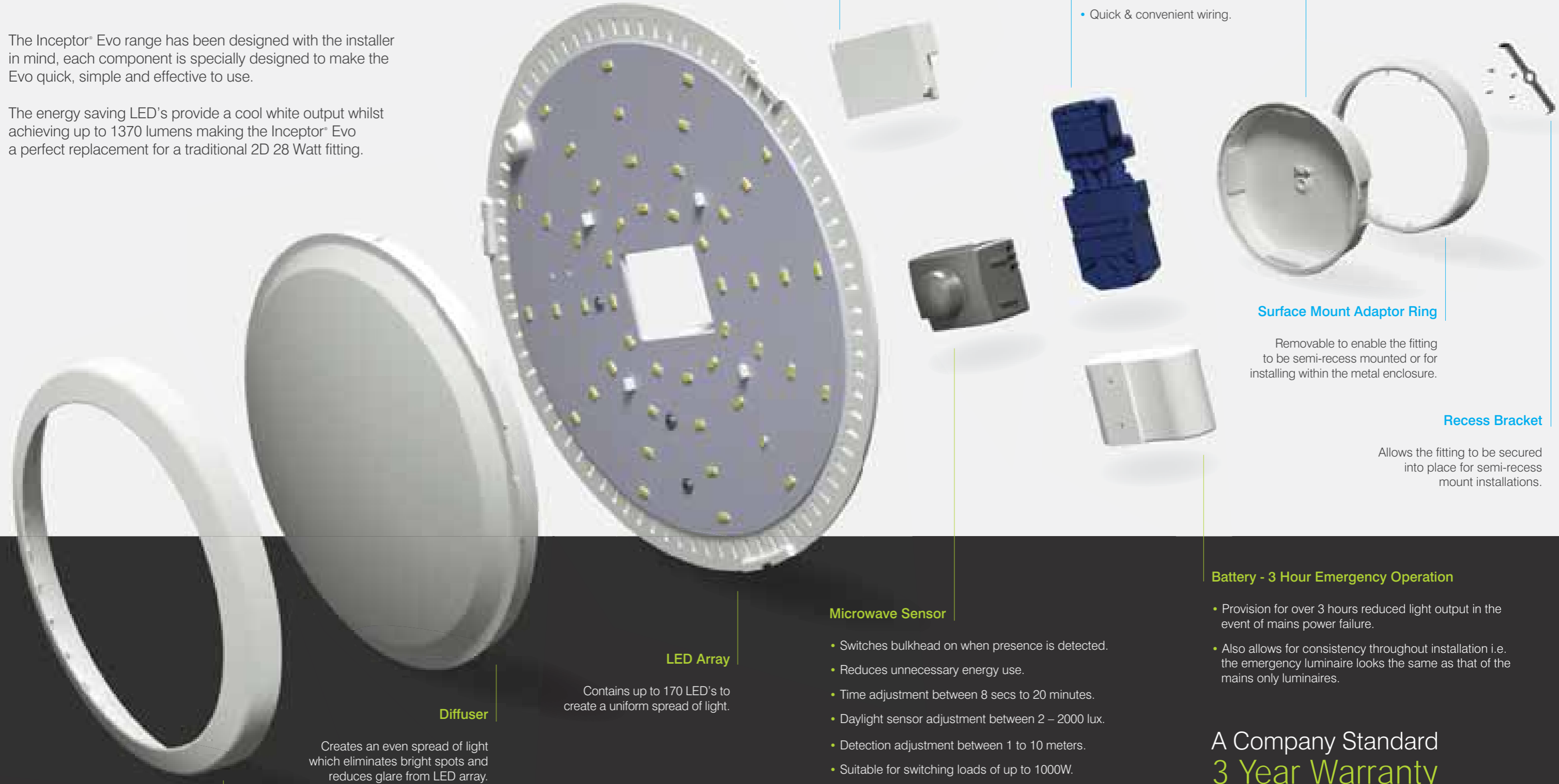
Grille

Inceptor® Evo Construction

Built with the contractor in mind.

The Inceptor® Evo range has been designed with the installer in mind, each component is specially designed to make the Evo quick, simple and effective to use.

The energy saving LED's provide a cool white output whilst achieving up to 1370 lumens making the Inceptor® Evo a perfect replacement for a traditional 2D 28 Watt fitting.



Circular Style Fascia

Attaches to base using twist and lock mechanism. Secures diffuser in position.

Diffuser

Creates an even spread of light which eliminates bright spots and reduces glare from LED array.

LED Array

Contains up to 170 LED's to create a uniform spread of light.

Driver

The driver converts mains AC voltage input to DC voltage output to the LED array.

Flow™ Connectors

- Saves time during install.
- Integrated LED driver prewired to a 4 pole Flow™ connector to aid installation and future maintenance.
- Allows simple maintenance/ servicing of the luminaire.
- Quick & convenient wiring.

Base

- Multiple base mounting options allow for flexibility of install.
- 4 side entry points & 1 rear entry point.
- Includes moisture seal to achieve IP65 rating.

Surface Mount Adaptor Ring

Removable to enable the fitting to be semi-recess mounted or for installing within the metal enclosure.

Recess Bracket

Allows the fitting to be secured into place for semi-recess mount installations.

Microwave Sensor

- Switches bulkhead on when presence is detected.
- Reduces unnecessary energy use.
- Time adjustment between 8 secs to 20 minutes.
- Daylight sensor adjustment between 2 – 2000 lux.
- Detection adjustment between 1 to 10 meters.
- Suitable for switching loads of up to 1000W.
- Microwave sensor controls orientated to allow easy adjustment during installation.

Battery - 3 Hour Emergency Operation

- Provision for over 3 hours reduced light output in the event of mains power failure.
- Also allows for consistency throughout installation i.e. the emergency luminaire looks the same as that of the mains only luminaires.

A Company Standard 3 Year Warranty

Covers the product in the case of a manufacturing defect.

Distinct Aluminium Designs



Circular

A Circular fascia allows light to be distributed at an optimum beam angle of 120°.

Eyelid

The Eyelid fascia reduces upward glare, providing greater direction and emphasis of illumination.

Grille

For architectural & design settings the Grille is a perfect fascia which also reduces glare.

The Inceptor® Evo can be used in a wide range of places and environments. The choice of three different metal fascias grants the opportunity to create a perfect look for the following areas:

- Corridors
- Walkways
- Underpasses
- Communal Areas
- Stairs
- Balconies
- Urban Spaces
- Courtyards & Patios

Features & Benefits

Manufactured using high quality UV stabilised polycarbonate. This makes the Inceptor® Evo suitable for the harshest of environments including installations in direct sunlight.

With removal of the PC rear outer housing, the circular internal body can be installed in to the metal enclosure. To aid security, all cover retaining bolts have a hex key head as standard.



Die-cast Aluminium Body

A die cast aluminium body ensures a high grade surface finish and a solid body to keep the bulkhead protected from any damage that may occur, especially in commercial areas.

Four Side Entry Points

The metal enclosures offer the same cable entry locations as the Evo's polycarbonate main body; with the four side entries sealed with removable inserts.



Steel base plate with access to rear.

Having a steel base plate at the back of the enclosure keeps the luminaire as secure as possible whilst keeping any damage to a minimum.

The PC cover can be locked using the tamper-proof screw. The metal enclosure is also supplied with four cover retaining screws.



Product Range



LED9500WH9

10W LED Utility Bulkhead – Standard

LED9500WH93EM

12W LED Utility Bulkhead – Emergency

LED9500WH9MS

12W LED Utility Bulkhead – Microwave Sensor

LED9500WH9MS3EM

17W LED Utility Bulkhead – Microwave Sensor & Emergency



LED9505WH9

10W LED Utility Bulkhead – Eyelid – Standard

LED9505WH93EM

12W LED Utility Bulkhead – Eyelid – Emergency

LED9505WH9MS

12W LED Utility Bulkhead – Eyelid – Microwave Sensor

LED9505WH9MS3EM

17W LED Utility Bulkhead – Eyelid – Microwave Sensor & Emergency



LED9001BK

Circular Housing



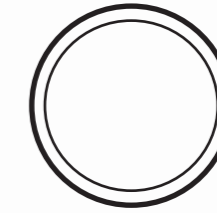
LED9002BK

Eyelid Housing



LED9003BK

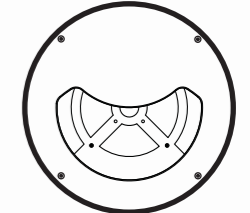
Grille Housing



Bulkhead

Ø308mm

Circular: 93mm Eyelid: 95mm



Housing

Ø348.5mm

Circular & Grill: 96mm Eyelid: 98mm

When surface mounted the overall product depth is a shallow 94mm. The diameter of the metal enclosure is 350mm. The circular and grille enclosures are 96mm whereas the eyelid enclosure is 98mm in depth. When semi-recessed, the product protrudes by 49mm. In semi-recessed installations, the metal bracket holds the bracket in position.

| Technical Information | | | | |
|--------------------------|--|--|--|--|
| Input Parameters | Standard Version | Emergency Version | Microwave Sensor Version | Emergency & Microwave Sensor Version |
| Input Voltage | 230V | 230V | 230V | 230V |
| Input Current | 0.063A | 0.090A | 0.095A | 0.133A |
| Input Wattage | Total Power: 10W | Total Power: 12W | Total Power: 12W | Total Power: 17W |
| Input Frequency | 50Hz~60Hz | 50Hz~60Hz | 50Hz~60Hz | 50Hz~60Hz |
| Output Parameters | | | | |
| No. of LED's | 150 PCS | 170 PCS | 150 PCS | 170 PCS |
| Colour Temperature | 4200K | 4200K | 4200K | 4200K |
| CRI | 68.4 | 68.4 | 68.4 | 68.4 |
| System Efficacy | 121lm/W | 100.8lm/W | 100.8lm/W | 80.6lm/W |
| LED Power | 9W | 9W | 9W | 9W |
| Lumen Output (Mains) | Without Diffuser (lm): 1790lm With Diffuser (lm): 1210lm 2m Without Diffuser (lux): 81lux 2m With Diffuser (lux): 56lux | Without Diffuser (lm): 1790lm With Diffuser (lm): 1210lm 2m Without Diffuser (lux): 81lux 2m With Diffuser (lux): 56lux | Without Diffuser (lm): 1790lm With Diffuser (lm): 1210lm 2m Without Diffuser (lux): 81lux 2m With Diffuser (lux): 56lux | Without Diffuser (lm): 2080lm With Diffuser (lm): 1370lm 2m Without Diffuser (lux): 96lux 2m With Diffuser (lux): 75lux |
| Lumen Output (Emergency) | N/A | Without Diffuser (lm): 494lm With Diffuser (lm): 349lm 2m Without Diffuser (lux): 38lux 2m With Diffuser (lux): 27lux | N/A | Without Diffuser (lm): 494lm With Diffuser (lm): 349lm 2m Without Diffuser (lux): 38lux 2m With Diffuser (lux): 27lux |
| Light Beam Angle | 120° | 120° | 120° | 120° |
| Area of Diffuser | 490m ² | 490m ² | 490m ² | 490m ² |
| Warranty | 3 Years | 3 Years | 3 Years | 3 Years |
| Operating Temperature | -5 - +45°C | -5 - +45°C | -5 - +45°C | -5 - +45°C |
| Weight | 1.43 kg | 1.48 kg | 1.78 kg | 1.83 kg |
| Fixture Parameters | | | | |
| Fixture Class | II | II | II | II |
| Mode of Mounting | Ceiling Mount, Wall Mount | Ceiling Mount, Wall Mount | Ceiling Mount, Wall Mount | Ceiling Mount, Wall Mount |
| IP Rating | IP65 | IP65 | IP65 | IP65 |
| UV Stabilised | Yes | Yes | Yes | Yes |



United Kingdom

Scolmore
GROUP

Scolmore Park, Landsberg,
Lichfield Road Industrial Estate,
Tamworth, Staffordshire
B79 7XB, United Kingdom

T: +44 (0)1827 63454
F: +44 (0)1827 63362
E: sales@scolmore.com

www.scolmore.com

Southern Ireland

CLICK Litehouse

18 Corrig Road,
Sandyford,
Dublin
D18 WV79, Ireland

T: +353 (1) 2811 122
F: +353 (1) 2811 224
E: sales@clicklighthouse.ie

www.clicklighthouse.ie

MAR2049

OVIA
LIGHTING BY CLICK